

Technical Information Sheet

Product Code: 8S1000X

8" Side Port Pressure Vessel

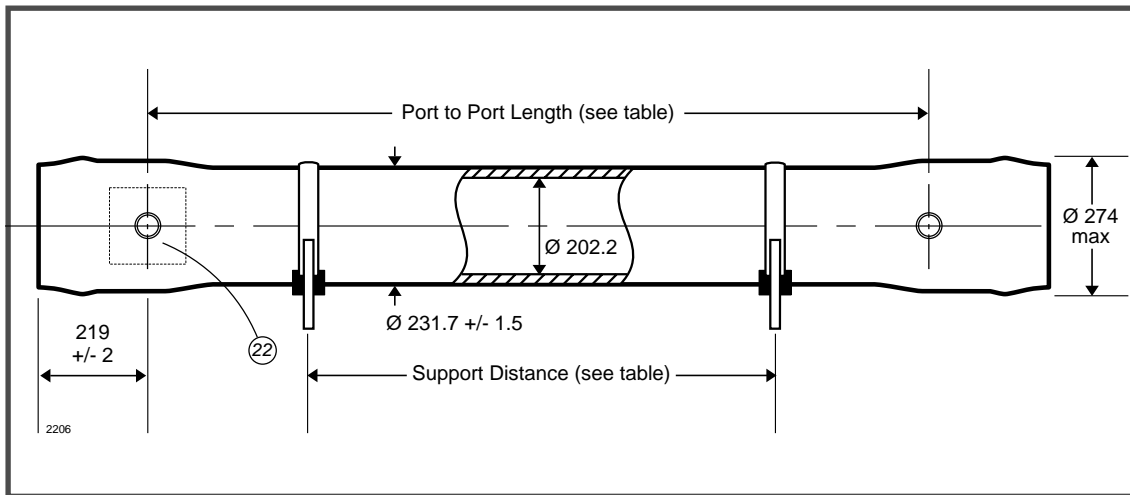
SIDE PORT

1000 psi (69.0 bar)

ASME X

Working Pressure: **1000 psi**
 Assembly Drawing: **1MNC 2206**

Working Temperature: **-7 to 45°C**
 Design Code: **ASME X**



Body of vessel is manufactured completely from glass reinforced epoxy resins.

Please advise membrane type and length when requesting further details.

Pressure vessels can be produced to cover all leading manufacturers membranes regardless of length.

Please adhere to recommended support positions, if in doubt contact Phoenix Vessels.

Feed and concentrate connections: 1.5" Victualic
 Product connections: 1.0" BSP Parallel (Male)

No of 40" Elements	Port to Port Length +/-1mm	Max support position	Min support position	Max Dry Weight
1	1143	740	500	65 kg
1.5	1651	1250	500	75 kg
2	2159	1750	500	85 kg
3	3175	2775	960	105 kg
4	4191	3190	1970	124 kg
4.5	4699	3375	2480	134 kg
5	5207	3560	2990	144 kg
6	6223	4020	4020	163 kg
7	7239	6170 c	5090 c	183 kg
7.5	7747	6220 c	5330 c	193 kg

All dimensions in mm
 All dimensions and weights are nominal unless stated otherwise.

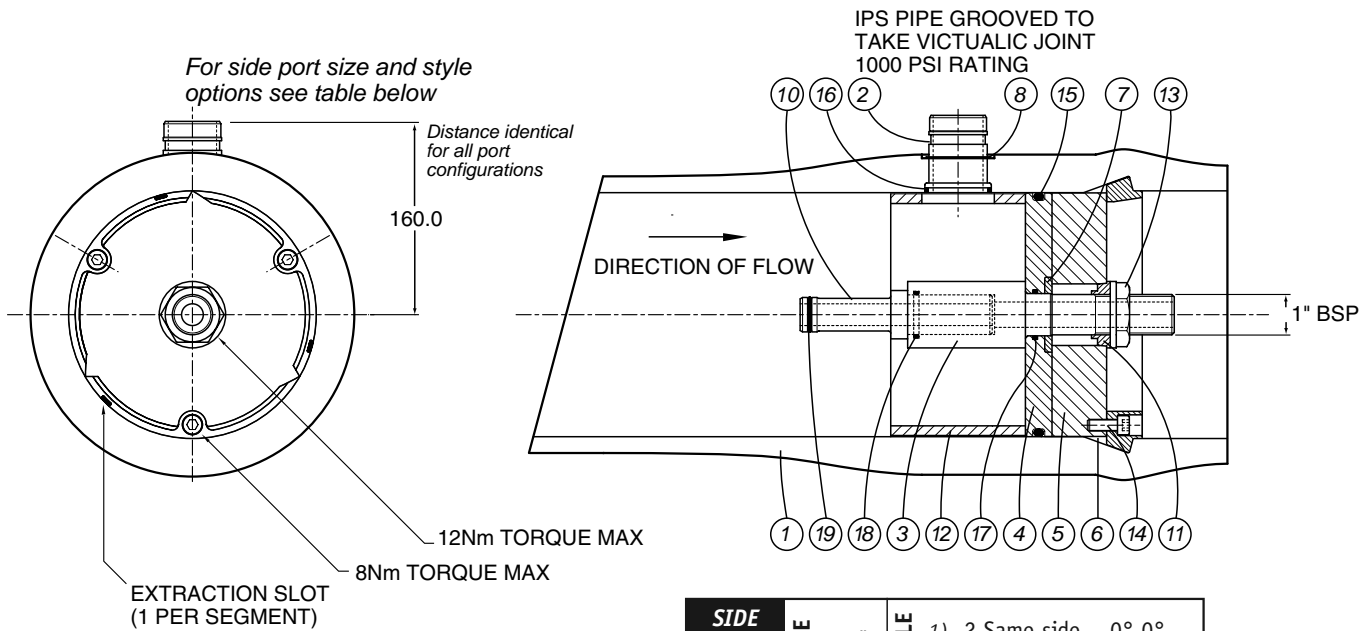
c = Central support required

8" SIDE Port Pressure Vessel

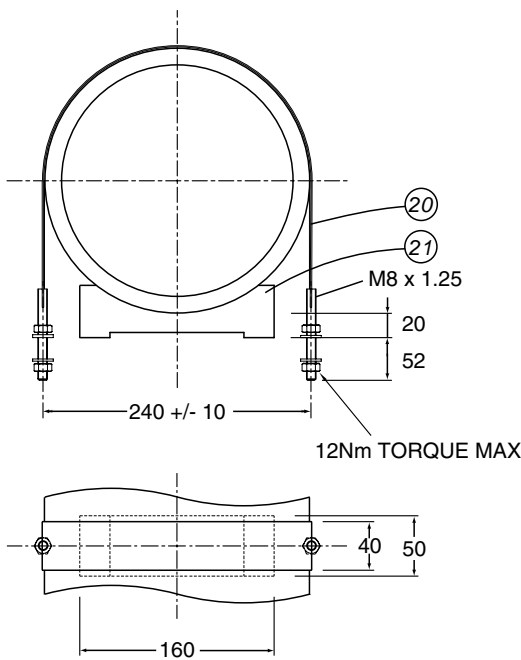
SIDE PORT

1000 psi (69.0 bar)

ASME X



SIDE PORT OPTIONS	SIZE	STYLE
	1.5"	1) 2 Same side - 0°,0° 2) 2 Opposing - 0°,180°



Item	Description	Material	Part No	No. off
1	Vessel Body	Glass Fibre Epoxy Resin	PVL 80-10-2215	1
2	Feed/Concentrate Port	Duplex Stainless Steel 2507 1.5" Port	PVL 80-12-2452	2
3	Product Tube	PETP	PVL 80-12-1946	2
4	End Plate	UPVC	PVL 80-12-1947	2
5	Backing Plate	Anodised Aluminium 6061-T6	PVL 80-10-2302	2
6	Retaining Ring	Stainless Steel 316	PVL 80-10-1470	2
7	Support Washer	Stainless Steel 316	PVL 80-12-1888	2
8	Spiroloc Circlip	Stainless Steel 302 1.5" Port	PVL 80-10-1950	2/4
9				
10	Adaptor	Thermoplastic	To suit membrane	2
11	Anti-rotation Collet	ABS	PVL 80-12-1892	2
12	Thrust Ring	MDPE	PVL 80-10-2023	1
13	1" BSP Backnut	UPVC/Polypropylene	PVL 80-10-1179	2
14	Cap Head Screw	Stainless Steel Grade A4	PVL 80-10-1520	6
15	'O' Seal Endplate	Nitrile WRC Listed	Size BS882	2
16	'O' Seal Feed Port	Nitrile WRC Listed 1.5" Port	Size BS832	2/4
17	'O' Seal Prod/Endplate	Nitrile WRC Listed	Size BS220	2
18	'O' Seal Prod/Adaptor	Nitrile WRC Listed	Size BS219	2
19	'O' Seal Adaptor	Nitrile WRC Listed	To suit membrane	2/4
20	Strap	Stainless Steel/Neoprene	PVL 80-12-1836	2/3
21	Saddle	Urethane	PVL 80-10-1075	2/3
22	Nameplate	Aluminium or Vinyl		1

Tighten all bolts/nuts to 50% of the maximum torque figure.
DO NOT EXCEED THE MAXIMUM TORQUE.

For lubricants and general assembly refer to the User Guide.

The company reserves the right to alter specifications without prior notice.